

## DEPARTMENT FOR CATHOLIC EDUCATION AND FORMATION

### VOCATIONS STATISTICS 2017

The statistics below were collected at the request of the Bishops' Conference of England and Wales by the National Office for Vocation and the Conference of Religious.

**TABLE 1 – Entrants into Formation for the Diocesan/Ordinatee Priesthood**

	TOTAL	Propaedeutic Year	Diocesan Seminary	Entries from Propaedeutic Year
Arundel and Brighton	2	1	1	0
Birmingham	1	1	0	0
Brentwood	4	1	3	0
Cardiff	1	1	0	0
Clifton	1	0	1	0
East Anglia	6	1	5	0
Hallam	0	0	0	0
Hexham and Newcastle	1	1	0	0
Lancaster	0	0	0	0
Leeds	1	0	1	0
Liverpool	6	4	2	1
Menevia	2	0	2	1
Middlesbrough	0	0	0	0
Northampton	0	0	0	0
Nottingham	2	1	1	0
Plymouth	0	0	0	0
Portsmouth	6	2	4	0
Salford	4	1	3	0
Shrewsbury	2	0	2	0
Southwark	0	0	0	0
Westminster	3	0	3	0
Wrexham	1	0	1	0
Ordinatee of Our Lady of Walsingham	0*	0	0	0
<b>TOTAL THIS YEAR</b>	<b>43</b>	<b>14</b>	<b>29</b>	<b>2</b>
<i>Total last year</i>	<i>(30)</i>	<i>(3)</i>	<i>(26)</i>	<i>(5)</i>

*\*Former Anglican clergy starting a course of formation*

**Total Number of New Entrants to Priestly Formation can be calculated as follows:**

Entrants into Propaedeutic Year + (Entrants into Diocesan Seminary/Ordinatee – Transfers from last year's Propaedeutic Year)

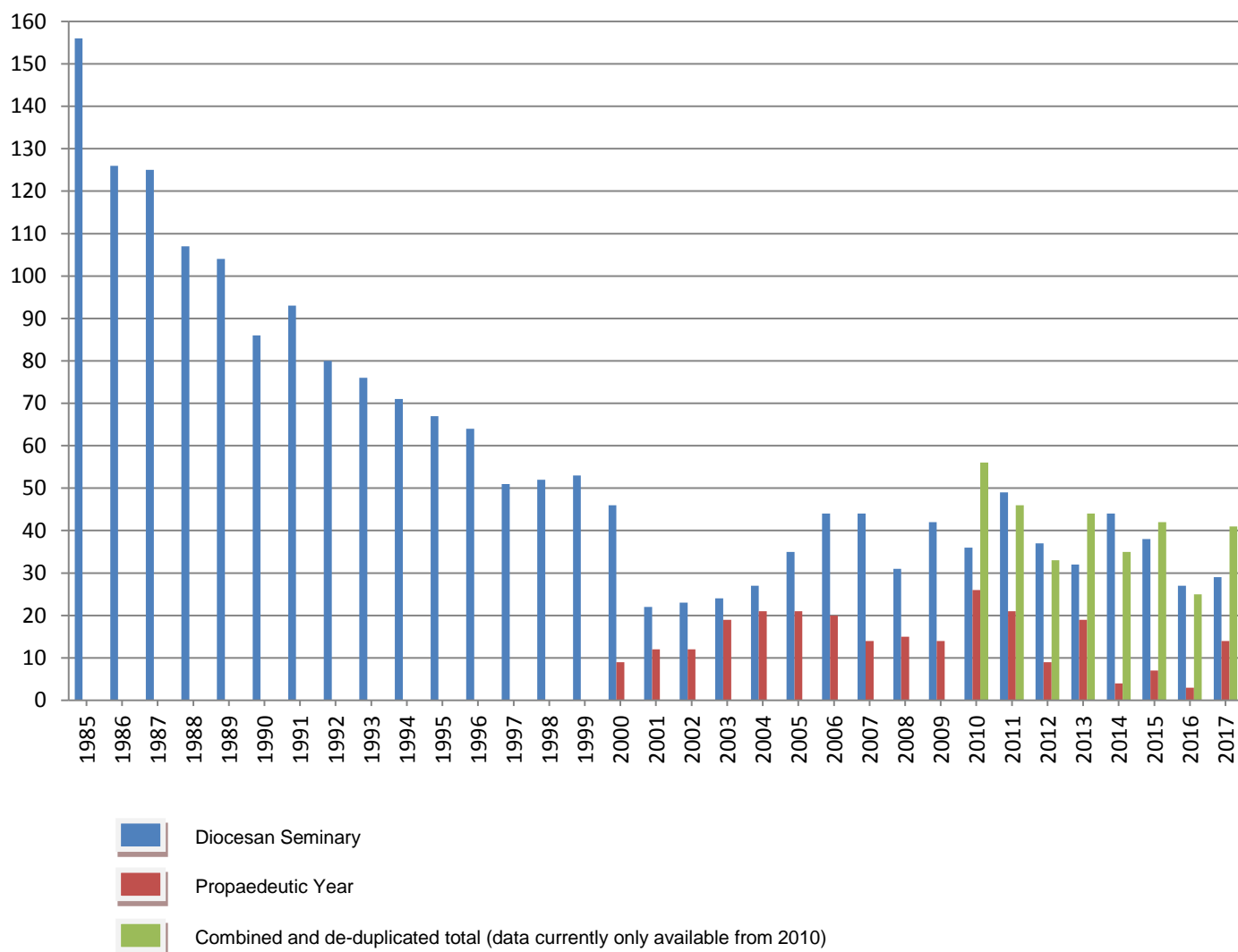
$$14 + (29 - 2) = 41$$

Transfers from Valladolid have been recorded since 2010 so the above calculation for a combined and de-duplicated total can be made and men transferring are not counted twice in statistics.

**TOTAL NUMBER OF NEW ENTRANTS FOR THE LAST FOUR ACADEMIC YEARS**

- 2017 = 41**
- 2016 = 25
- 2015 = 42
- 2014 = 35

## Entrants into Formation for the Diocesan/Ordinate Priesthood in England & Wales 1985-2017



**TABLE 2 – Formation Data for Religious Congregations and Societies of Apostolic Life\***

	Members of Religious Congregations and Societies of Apostolic Life		Enclosed Nuns	Associations of the Faithful Intending to become Religious Congregations (Women)	Sisters of the Blessed Virgin Mary (Ordinate)	TOTAL
	Men	Women				
Entering Formation	20 (29)	6 (21)	9 (9)	0 (1)	0 (0)	35 (60)
First Profession	7 (12)	2 (8)	7 (5)	2 (0)	N/A	18 (25)
Final Profession	10 (8)	3 (4)	1 (6)	0 (0)	N/A	14 (17)

Total number of men that entered religious life: 20 (29)

Total number of women that entered religious life: 15 (31)

Total number of entrants to religious life: **35 (60)**

*Numbers in brackets are figures from 2016*

**\*See appendix for historical data**

**TABLE 3 – Analysis by Age at Entry**

Age Range	Diocesan Priesthood		Members of Religious Congregations and Societies of Apostolic Life		Enclosed Nuns
	Propaedeutic Year	Diocesan Seminary	Men	Women	
17-18	1	0	0	0	0
19-22	2	5	1	1	0
23-25	3	6	8	0	0
26-30	3	3	5	0	0
31-35	2	3	2	2	2
36-40	2	3	0	0	3
41-50	0	2	3	3	2
51+	1	7	1	0	2
<b>TOTAL</b>	<b>14</b>	<b>29</b>	<b>20</b>	<b>6</b>	<b>9</b>

- Average age for entry to propaedeutic year: 30
- Average age for entry to diocesan seminary: 36
- Average age for entry into formation for the diocesan priesthood (diocesan seminary and propaedeutic year combined): 34

**TABLE 4 – Number of those in Priestly Formation for the Diocesan/Ordinate Priesthood**

	<b>Current</b>	<b>(2016)</b>
Number of students in propaedeutic year	14	(3)
Number of students in seminary formation (including those on pastoral placement)	143	(166)
Students not in seminary but still in a programme of formation	6	(10)
<b>Total number of those in formation for diocesan/ordinate priesthood</b>	<b>163</b>	<b>(179)</b>

## Number of Ordinations to the Diocesan/Ordinatee Priesthood in England & Wales 2017

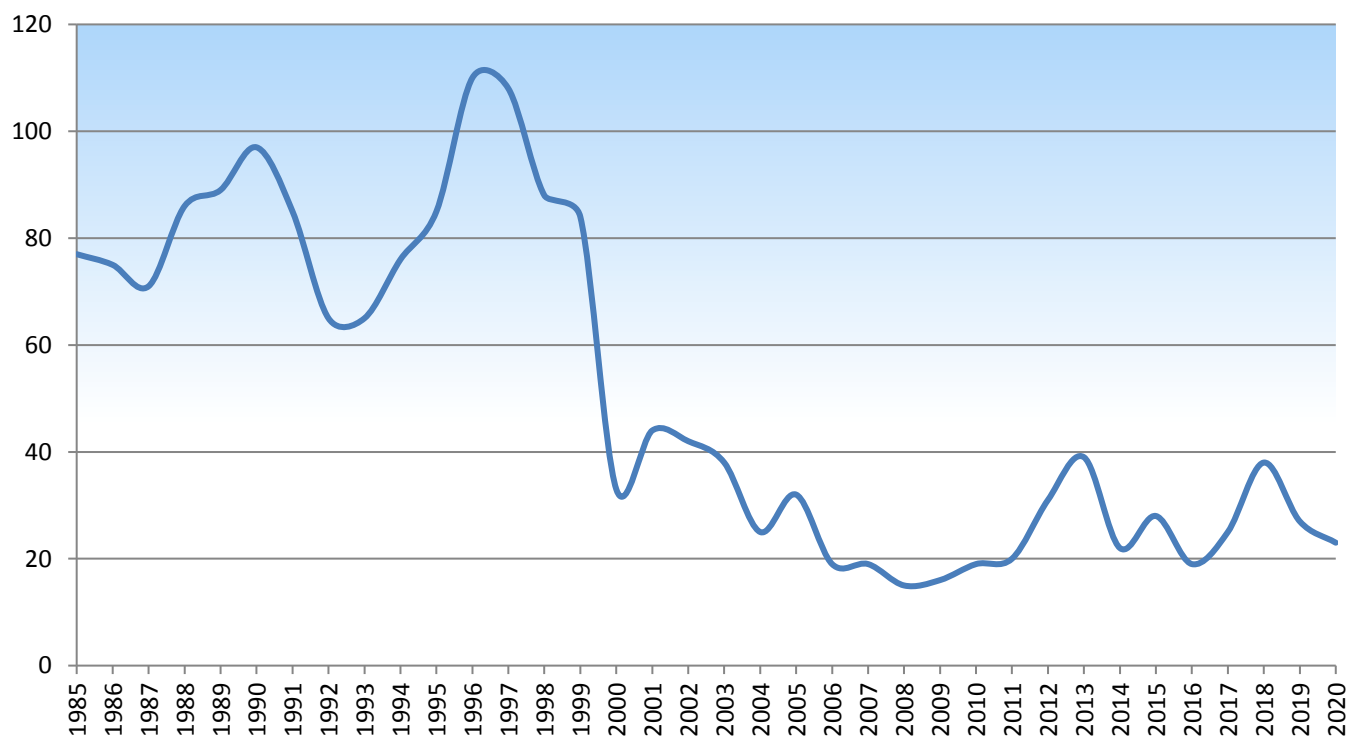
Total ordinations to diocesan priesthood: 25 (19 in 2016)

**TABLE 5 – Ordinations and Projected Future Ordinations to the Diocesan/Ordinatee Priesthood**

*Projected*

	2017	2018	2019	2020
Arundel & Brighton	1	1	1	1
Birmingham	0	2	3	3
Brentwood	1	2	0	0
Cardiff	3	3	1	1
Clifton	1	0	0	2
East Anglia	1	0	4	0
Hallam	1	0	0	1
Hexham & Newcastle	1	0	0	1
Lancaster	1	0	0	0
Leeds	2	0	1	0
Liverpool	1	3	1	1
Menevia	0	1	0	1
Middlesbrough	0	1	0	1
Northampton	1	0	3	1
Nottingham	0	1	2	1
Plymouth	0	1	1	0
Portsmouth	2	0	1	0
Salford	2	1	2	0
Shrewsbury	0	1	1	1
Southwark	1	3	2	3
Westminster	3	10	1	3
Wrexham	0	0	0	0
Ordinatee of Our Lady of Walsingham	3	8	3	2
<b>TOTAL</b>	<b>25</b>	<b>38</b>	<b>27</b>	<b>23</b>

**Ordinations and Projected Future Ordinations to the Diocesan/Ordinatee Priesthood in England & Wales 1985-2020**



## Appendix

### Entrants into Religious Communities in England and Wales 1985-2017

Year	Enclosed Nuns	Other Religious Sisters	TOTAL WOMEN	Order Brothers	Order Priests	TOTAL MEN	TOTAL
1985	28	54	82	6	74	80	162
1986	21	58	79	5	54	59	138
1987	23	55	78	4	56	60	138
1988	12	38	50	1	48	49	99
1989	20	31	51	3	49	52	103
1990	24	30	54	3	49	52	106
1991	14	25	39	1	54	55	94
1992	9	28	37	1	39	40	77
1993	17	17	34	3	45	48	82
1994	12	22	34	1	38	39	73
1995	19	16	35	2	36	38	73
1996	13	13	26	0	32	32	58
1997	10	12	22	3	24	27	49
1998	10	12	22	1	23	24	46
1999	10	12	22	1	20	21	43
2000	10	12	22	1	19	20	42
2001	10	12	22	0	16	16	38
2002	9	10	19	0	15	15	34
2003	12	8	20	2	10	12	32
2004	4	3	7	1	11	12	19
2005	9	4	13	0	18	18	31
2006	6	8	14	2	12	14	28
2007	7	9	16	1	13	14	30
2008	11	15	26	2	12	14	40
2009	9	6	15	0	19	19	34
2010	9	10	19	0	19	19	38
2011	8	17	25	0	19	19	44
2012	11	23	34	0	30	30	64
2013	13	17*	30	0	22	22	52*
2014	18	27	45	0	18	18	63
2015	10	19	29	0	25	25	54
2016	9	22	31	0	29	29	60
2017	9	6	15	0	20	20	35

These statistics are provided by the Conference of Religious and the National Office for Vocation.

\*This figure does not include the 10 former Anglican sisters who established an autonomous monastery within the Personal Ordinariate of Our Lady of Walsingham.